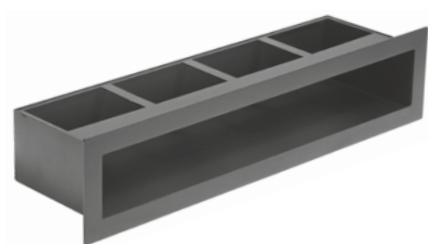
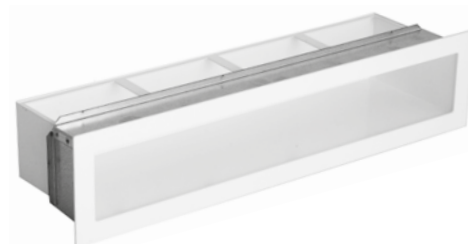




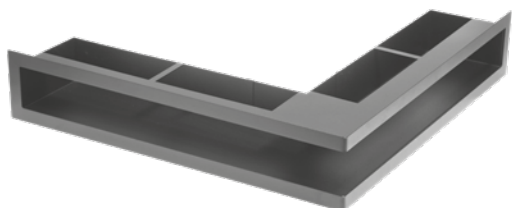
Dostępne warianty:



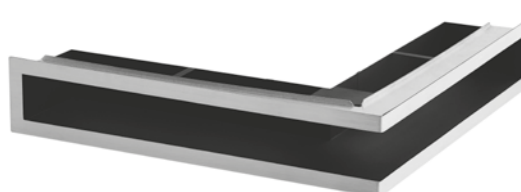
**KRATKA PROSTA**



**KRATKA PROSTA Z RAMKĄ**



**KRATKA NAROŻNA**

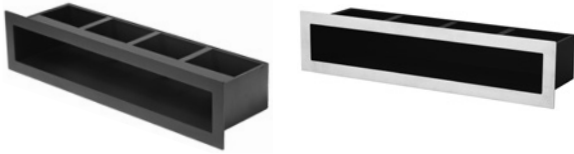


**KRATKA NAROŻNA Z RAMKĄ**

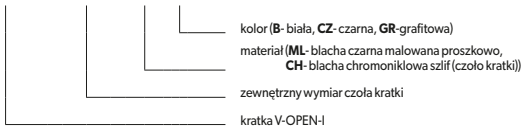
Zastosowanie	obudowy kominkowe	
	wyloty ciepłego i zimnego powietrza	
	tylko wewnątrz budynków	
Materiał	ML	ML - blacha czarna malowana proszkowo
	CH	CH - blacha chromoniklowa szlif (czoło kratki)
Kolor	B	biała
	CZ	czarna
	GR	grafitowa

Maksymalna temperatura pracy: 180°C

## KRATKA V-OPEN-I PROSTA

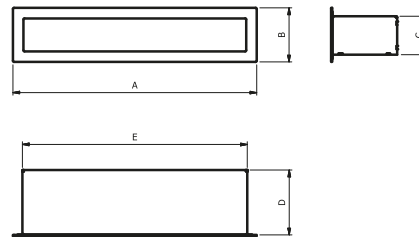


### KRVO-I - AxB - ... .a



## Wymiary/dane techniczne:

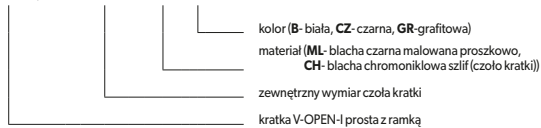
Wymiar zewnętrzny czoła kratki AxB [mm]	Przekrój czynny [cm <sup>2</sup> ]	Wymiary [mm]			Waga [kg]
		C	D	E	
450x100	235	71	120	415	1.4
700x100	395	71	120	665	1.5
900x100	515	71	120	865	2.6
450x70	125	41	91	415	1.2
700x70	210	41	91	665	2.0
900x70	265	41	91	865	2.2



## KRATKA V-OPEN-I PROSTA Z RAMKĄ

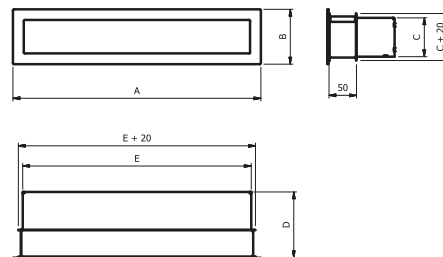


### KRVO-I/R - AxB - ... .a

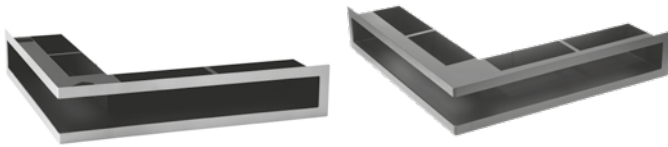


## Wymiary/dane techniczne:

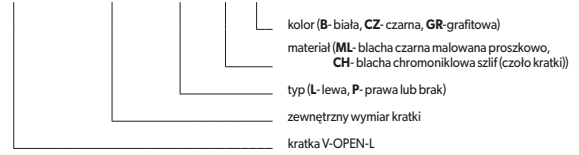
Wymiar zewnętrzny czoła kratki AxB [mm]	Przekrój czynny [cm <sup>2</sup> ]	Wymiary [mm]			Waga [kg]
		C	D	E	
450x100	235	71	120	415	1.9
700x100	395	71	120	665	2.7
900x100	515	71	120	865	3.6
450x70	125	41	91	415	1.7
700x70	210	41	91	665	2.3
900x70	265	41	91	865	3.2



## KRATKA V-OPEN-L NAROŻNA

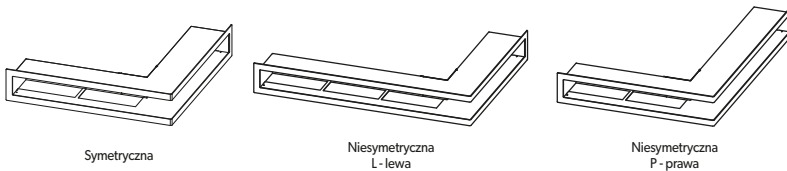
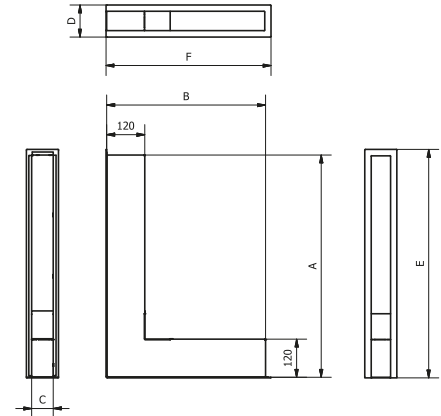


### KRVO-L - Ax B/D - ... - ... a

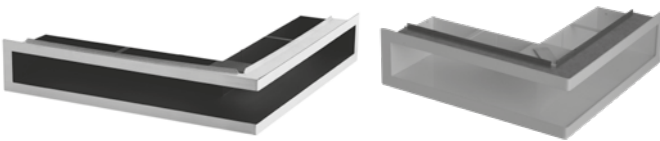


### Wymiary/dane techniczne:

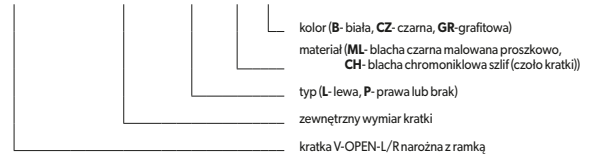
Typ	Wymiar zewnętrzny czola kratki Ax B/D [mm]	Przekrój czynny [cm <sup>2</sup> ]	Wymiary [mm]							Waga [kg]
			A	B	C	D	E	F	G	
P	300x500/100	365	300	500	68	100	320	520	120	2.1
	300x500/70	248	300	500	38	70	320	520	120	1.9
L	500x300/100	365	500	300	68	100	520	320	120	2.1
	500x300/70	248	500	300	38	70	520	320	120	1.9
-	500x500/100	495	500	500	68	100	520	520	120	3.4
	500x500/70	310	500	500	38	70	520	520	120	2.8
P	500x700/100	626	500	700	68	100	520	720	120	3.2
	500x700/70	372	500	700	38	70	520	720	120	2.9
L	700x500/100	626	700	500	68	100	720	520	120	3.2
	700x500/70	372	700	500	38	70	720	520	120	2.9



## KRATKA V-OPEN-L/R NAROŻNA Z RAMKĄ



### KRVO-L/R - Ax B/D - ... - ... a



### Wymiary/dane techniczne:

Typ	Wymiar zewnętrzny czola kratki Ax B/D [mm]	Przekrój czynny [cm <sup>2</sup> ]	Wymiary [mm]							Waga [kg]
			A	B	C	D	E	F	G	
P	300x500/100	365	300	500	68	100	320	520	120	2.9
	300x500/70	248	300	500	38	70	320	520	120	2.7
L	500x300/100	365	500	300	68	100	520	320	120	2.9
	500x300/70	248	500	300	38	70	520	320	120	2.7
-	500x500/100	495	500	500	68	100	520	520	120	3.8
	500x500/70	310	500	500	38	70	520	520	120	3.4
P	500x700/100	626	500	700	68	100	520	720	120	4.3
	500x700/70	372	500	700	38	70	520	720	120	4.0
L	700x500/100	626	700	500	68	100	720	520	120	4.3
	700x500/70	372	700	500	38	70	720	520	120	4.0

