



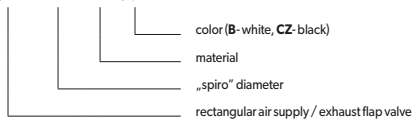
Destination	cold and hot air supply	
	cold and hot air exhaust	
Material	ML ML - mild steel sheet powder coated	
	B	white
Color	CZ	black

Mounting frame included.

RECTANGULAR AIR SUPPLY / EXHAUST FLAP VALVE



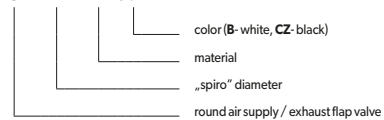
ASKV x - ML.a



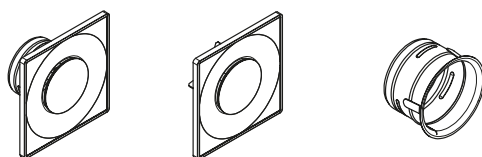
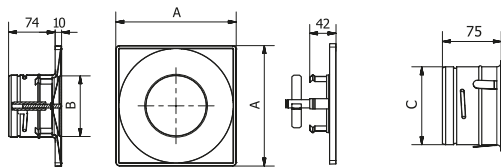
ROUND AIR SUPPLY / EXHAUST FLAP VALVE



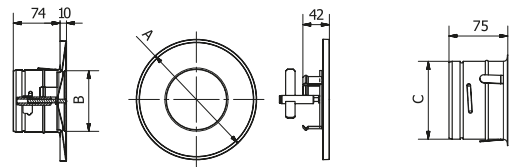
ASV x - ML.a



Dimensions/technical data:



„spiro“ diameter [mm]	Dimensions [mm]			Weight [kg]
	A	B	C	
100	190	96	98,5	0,5
125	215	121	123,5	0,6
150	240	146	148,5	0,7



„spiro“ diameter [mm]	Dimensions [mm]			Weight [kg]
	A	B	C	
100	190	96	98,5	0,5
125	215	121	123,5	0,6
150	240	146	148,5	0,7