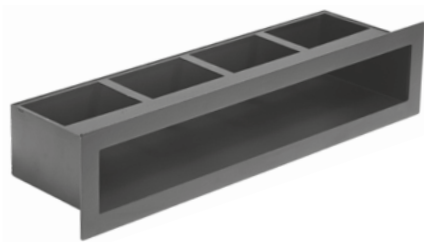
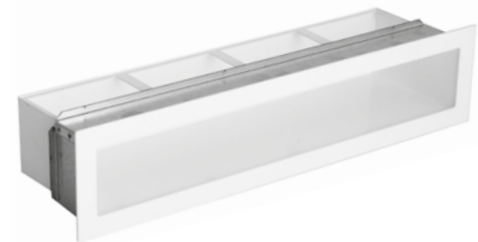




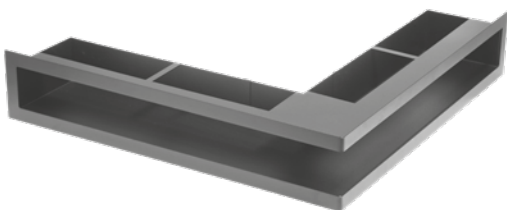
Versions:



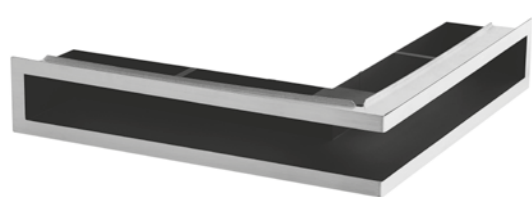
GRILLE V-OPEN



GRILLE V-OPEN WITH FRAME



CORNER GRILLE V-OPEN

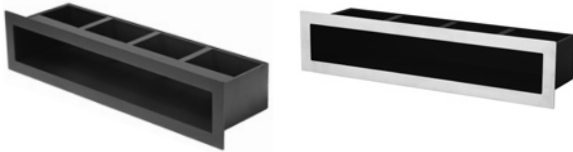


CORNER GRILLE V-OPEN WITH FRAME

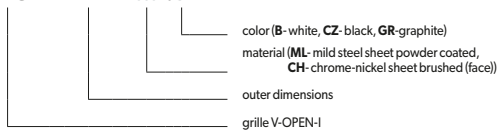
Destination	fireplace claddings	
	ventilation ducts, air heating	
	for interior mounting	
Material	ML	ML - mild steel sheet powder coated
	CH	CH - chrome-nickel sheet brushed (face)
Color	B	white
	CZ	black
	GR	graphite

Maximal working temperature: 180°C

GRILLE V-OPEN-I

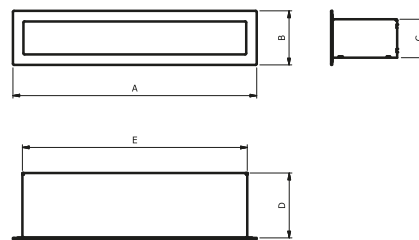


KRVO-I - AxB -a



Dimensions/technical data:

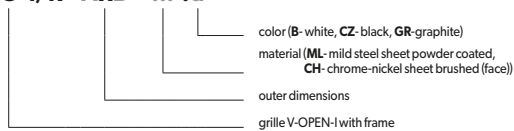
Face outer dimensions AxB [mm]	Cross section [cm ²]	Dimensions [mm]			Weight [kg]
		C	D	E	
450x100	235	71	120	415	1.4
700x100	395	71	120	665	1.5
900x100	515	71	120	865	2.6
450x70	125	41	91	415	1.2
700x70	210	41	91	665	2.0
900x70	265	41	91	865	2.2



GRILLE V-OPEN-I WITH FRAME

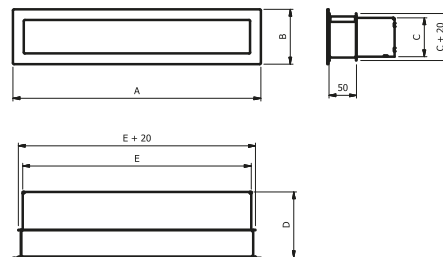


KRVO-I/R - AxB -a

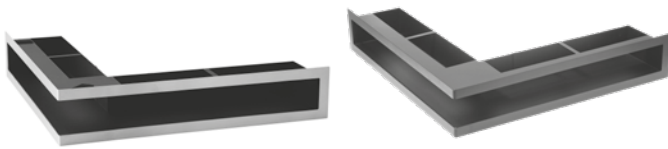


Dimensions/technical data:

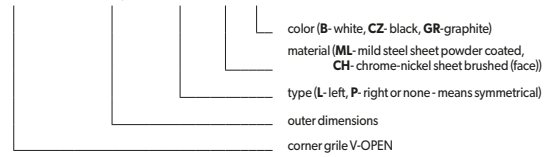
Face outer dimensions AxB [mm]	Cross section [cm ²]	Dimensions [mm]			Weight [kg]
		C	D	E	
450x100	235	71	120	415	1.9
700x100	395	71	120	665	2.7
900x100	515	71	120	865	3.6
450x70	125	41	91	415	1.7
700x70	210	41	91	665	2.3
900x70	265	41	91	865	3.2



CORNER GRILE V-OPEN

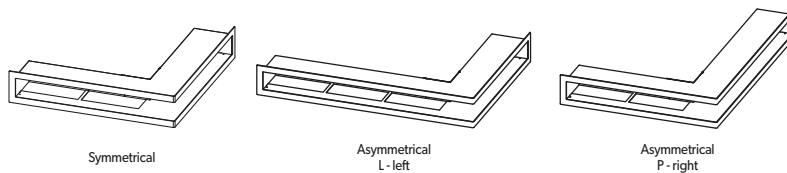
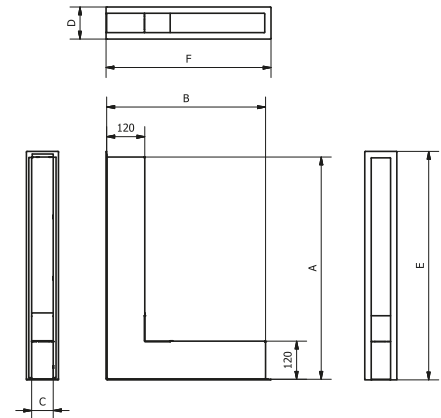


KRVO-L - AxB/D - ... - ... a

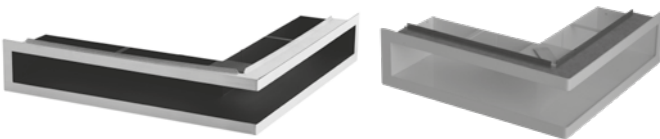


Dimensions/technical data:

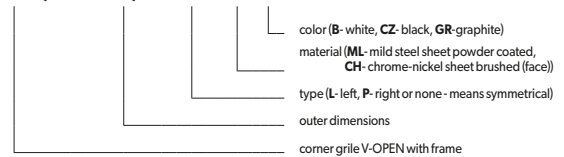
Type	Face outer dimensions AxB/D [mm]	Cross section [cm ²]	Dimensions [mm]							Weight [kg]
			A	B	C	D	E	F	G	
P	300x500/100	365	300	500	68	100	320	520	120	2.1
	300x500/70	248	300	500	38	70	320	520	120	1.9
L	500x300/100	365	500	300	68	100	520	320	120	2.1
	500x300/70	248	500	300	38	70	520	320	120	1.9
-	500x500/100	495	500	500	68	100	520	520	120	3.4
	500x500/70	310	500	500	38	70	520	520	120	2.8
P	500x700/100	626	500	700	68	100	520	720	120	3.2
	500x700/70	372	500	700	38	70	520	720	120	2.9
L	700x500/100	626	700	500	68	100	720	520	120	3.2
	700x500/70	372	700	500	38	70	720	520	120	2.9



CORNER GRILE V-OPEN WITH FRAME



KRVO-L/R - AxB/D - ... - ... a



Dimensions/technical data:

Type	Face outer dimensions AxB/D [mm]	Cross section [cm ²]	Dimensions [mm]							Weight [kg]
			A	B	C	D	E	F	G	
P	300x500/100	365	300	500	68	100	320	520	120	2.9
	300x500/70	248	300	500	38	70	320	520	120	2.7
L	500x300/100	365	500	300	68	100	520	320	120	2.9
	500x300/70	248	500	300	38	70	520	320	120	2.7
-	500x500/100	495	500	500	68	100	520	520	120	3.8
	500x500/70	310	500	500	38	70	520	520	120	3.4
P	500x700/100	626	500	700	68	100	520	720	120	4.3
	500x700/70	372	500	700	38	70	520	720	120	4.0
L	700x500/100	626	700	500	68	100	720	520	120	4.3
	700x500/70	372	700	500	38	70	720	520	120	4.0

