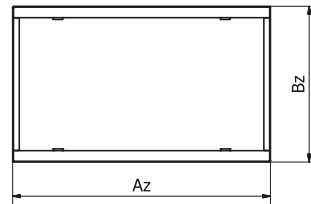
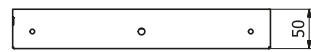


		KRVZ	KRVZS	KRVSM	KRVIN	KRVT	KRVTZ	KRR
1	Levelling frame	•	•	•	•			
2	Decking grille	•	•	•				
3	Masking plate	•	•	•	•	•	•	
4	LOFT masking plate							•
5	Inlet cassette	•	•	•	•	•	•	
6	Lateral inlet cassette	•	•	•	•	•	•	
7	Double inlet cassette	•	•	•	•	•	•	
8	Double lateral inlet cassette	•	•	•	•	•	•	

## 1. LEVELLING FRAME



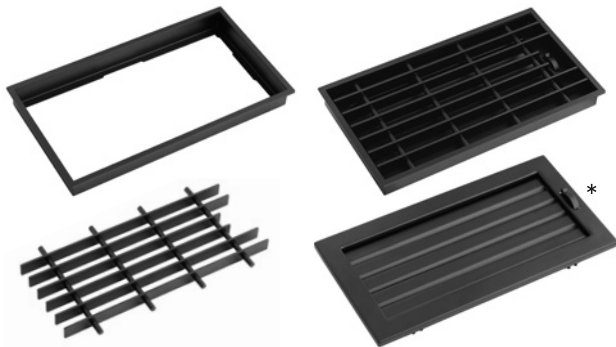
**KRV-RL AxB - ML.a**



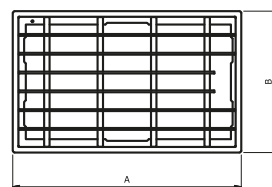
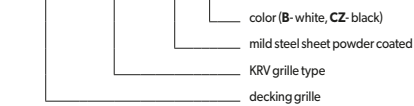
\* set does not include the KRV grille

KRV grille type AxB [mm]	Frame dimensions [mm]		Weight [kg]
	Az	Bz	
220x95	223	98	0.2
200x145	203	148	0.2
190x170	193	173	0.2
240x170	243	173	0.2
220x220	223	223	0.3
325x170	328	173	0.3
325x195	328	308	0.3
450x170	453	173	0.4
450x220	453	223	0.4
450x240	453	243	0.4

## 2. DECKING GRILLE



**KRVD AxB - ML.a**



\* set does not include the KRV grille

KRV grille type AxB [mm]	Dimensions [mm]				Weight* [kg]
	A	B	C	D	
325x170	342	187	328	173	3.0
325x195	342	212	328	198	3.3
450x170	467	187	453	173	4.0
450x240	467	257	453	243	5.0

## 3. MASKING PLATE

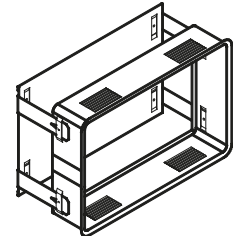
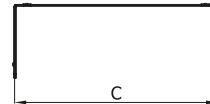
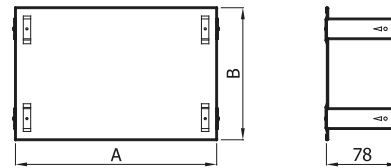
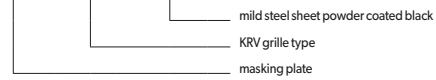


\*

\* frame not included

KRV grille type AxB [mm]	Dimensions [mm]		Weight [kg]
	A	B	
200x145	180	120	0.2
190x170	170	145	0.2
240x170	220	145	0.2
220x220	200	195	0.3
325x170	305	145	0.3
325x195	305	170	0.3
450x170	430	145	0.4
450x220	430	195	0.5
450x240	430	215	0.5

### MKKRV AxB - ML.CZ

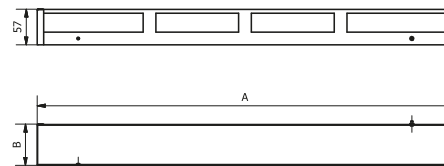


## 4. LOFT MASKING PLATE



LOFT grille type	Dimensions [mm]		Weight [kg]
	A	B	
350x60	353	65	0.3
650x60	653	65	0.6
1000x60	1003	65	0.9
350x100	353	103	0.5
500x100	503	133	0.6
650x100	653	103	0.8
800x100	803	103	0.9
1000x100	1003	103	1.1
650x150	653	155	0.9
350x150	353	155	0.6

### MKKRR ...x... - ML.CZ

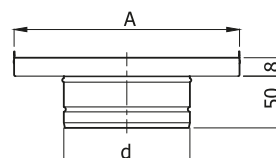
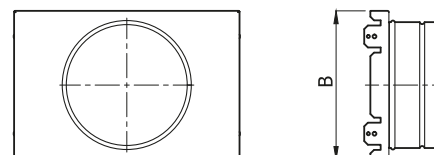
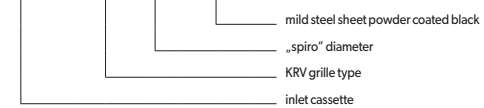


## 5. INLET CASSETTE



KRV grille type AxB [mm]	Dimensions [mm]		d „spiro“ [mm]	Weight [kg]
	A	B		
200x145	180	120	80-110	0.2
190x170	170	145	80-150	0.2
240x170	220	145	80-150	0.3
220x220	200	195	80-180	0.3
325x170	305	145	80-150	0.3
325x195	305	170	80-150	0.3
450x170	430	145	80-150	0.4
450x220	430	195	80-180	0.5
450x240	430	215	80-200	0.5

### KDKRV AxB / d - ML.CZ

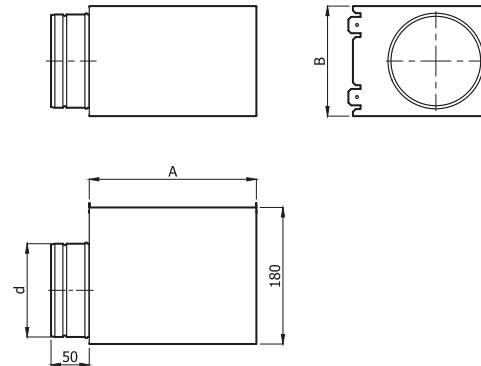
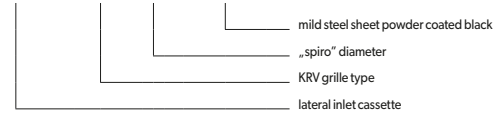


## 6. LATERAL INLET CASSETTE



KRV grille type AxB [mm]	Dimensions [mm]		d „spiro“ [mm]	Weight [kg]
	A	B		
200x145	180	120	80-110	0.6
190x170	170	145	80-150	0.6
240x170	220	145	80-150	0.7
220x220	200	195	80-180	0.8
325x170	305	145	80-150	0.9
325x195	305	170	80-150	1.0
450x170	430	145	80-150	1.4
450x220	430	195	80-180	1.4
450x240	430	215	80-200	1.5

### KDBKRV AxB / d - ML.CZ

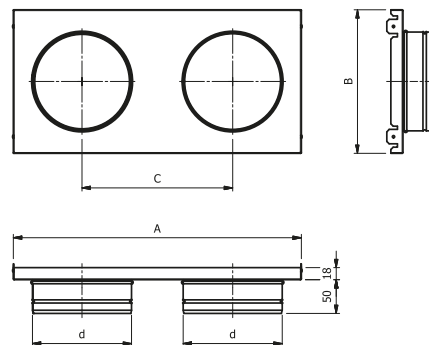
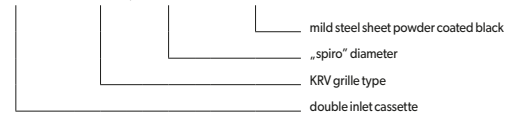


## 7. DOUBLE INLET CASSETTE



KRV grille type AxB [mm]	Dimensions [mm]			d „spiro“ [mm]	Weight [kg]
	A	B	C		
450x170	430	145	225	2x80-150	0.5
450x220	430	195	225	2x80-180	0.5
450x240	430	215	225	2x80-180	0.5

### KDKPRV AxB / 2xd - ML.CZ



## 8. DOUBLE LATERAL INLET CASSETTE



KRV grille type AxB [mm]	Dimensions [mm]			d „spiro“ [mm]	Weight [kg]
	A	B	C		
450x170	430	145	225	2x80-150	1.3
450x220	430	195	225	2x80-180	1.4
450x240	430	215	225	2x80-180	1.4

### KDBKRV AxB / 2xd - ML.CZ

